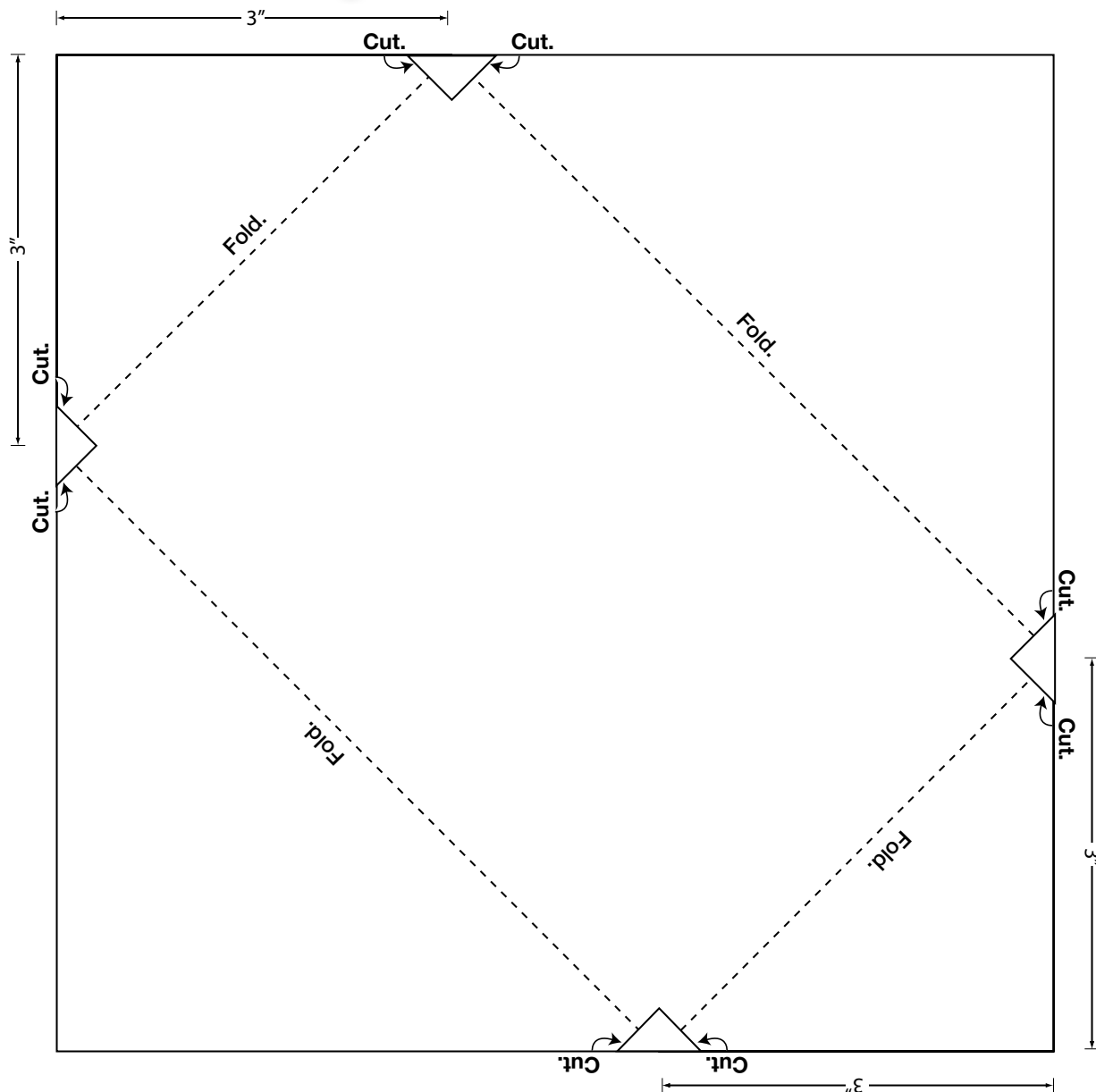


APPENDIX *for the* TEXAS ALMANAC

Folded Envelope Invitation Card



SUPPLIES FOR EACH CARD

1. Cardstock: one 7 1/2" x 7 1/2" piece
2. White paper: one 3 3/4" x 6" piece
3. White paper: one 2" x 3" piece
4. Glue

STEPS

1. Measure and mark fold lines on the 7 1/2" x 7 1/2" piece of cardstock, according to the pattern.
2. Cut notches as shown on the pattern.
3. Write invitation on 3 3/4" x 6" piece of white paper.
4. Glue the written invitation in the middle of the 7 1/2" x 7 1/2" piece of cardstock.
5. Fold along the fold lines to cover the invitation.
6. Glue 2" x 3" piece of white paper to the invitation; illustrate and color one of the symbols of Texas on it.